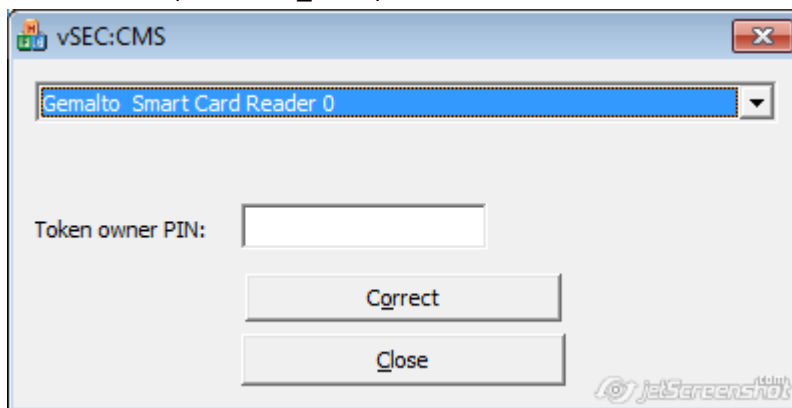


FixLicTool

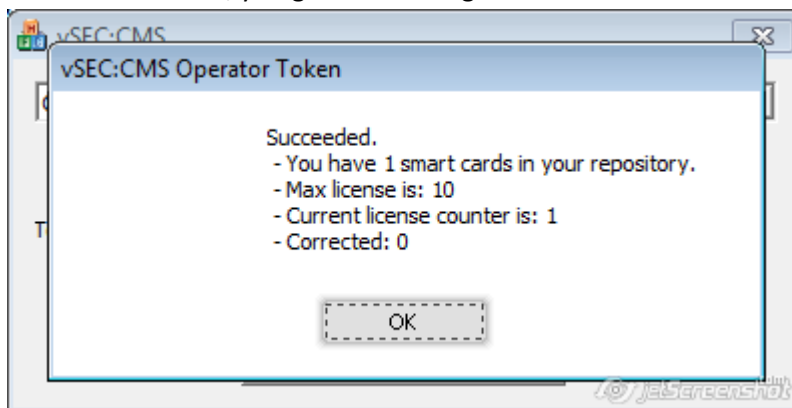
This tool fixes license counter issues in operator applet on full-featured vSEC:CMS S-Series operator tokens.

How to use it

- Copy the file **FixLicTool_S.exe** to the vSEC:CMS server and place in the root location of the installation. If you are running 64-bit the default location is **C:\Program Files\Versasec\vSEC_CMS S-Series** and for 32-bit it is **C:\Program Files (x86)\Versasec\vSEC_CMS S-Series**.
- Make sure that the CMS admin console is not open on the server
- Start the tool (FixLicTool_S.exe)



- Select the correct reader (the one from the Operator Token), or make sure there is no other smart card available on the system, so the correct reader gets automatically selected.
- Enter Token owner PIN and click "Correct" button.
- If it was successful, you get this message:



It says how many cards are in the repository and which license counters are currently in the applet.